

Magnetic Door Holders

Features

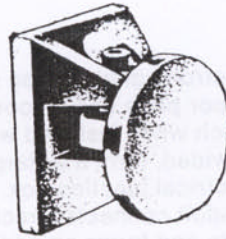
- Meet all approval requirements
- Models for any application
- Integral part of any fire alarm system
- ULC LISTED

Description

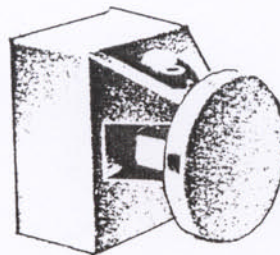
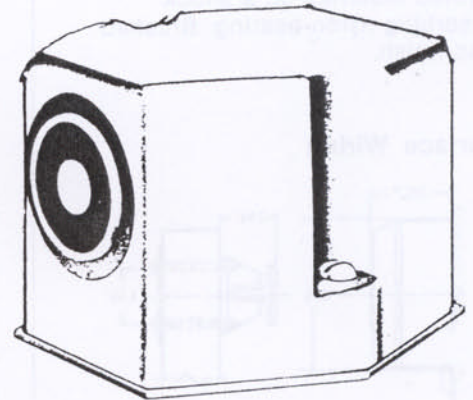
Edwards door releases should be installed wherever doors may be effectively used to confine smoke and fire, or where the release of a self-closing door from a remote location is desirable for other reasons.

Fail-safe operation is an inherent feature of Edwards door holder-releases. If power fails, doors are released automatically, but may be opened or closed manually at any time. All units are free of moving parts, are self-contained and thus require no maintenance.

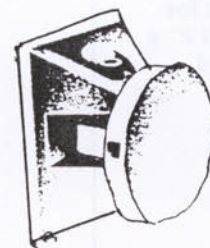
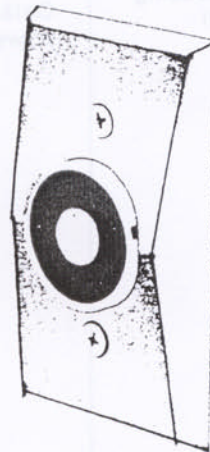
These doorholder-releases have a holding force of approximately 25 lb. The armature section is mounted on the door and has a simple adjusting screw for setting the angle of the contact plate during installation. The electromagnet section is mounted on the wall, wall cavity or floor behind the door. The device holds a door open until signaled by a fire alarm system, heat detector, ionization type sensor, or electrical switch. When actuated the door holders release doors to a closed position, checking the spread of smoke and flames.



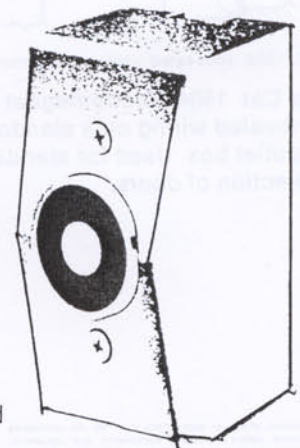
1501
Floor Mounted
(Single Door)



1504
Flush Wall Mounted



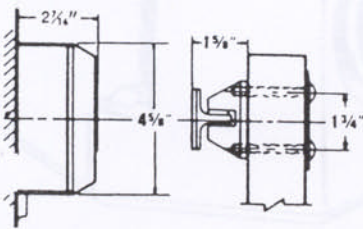
1508
Surface Wall Mounted



Installation Wall Mounted

A two part, low cost, rugged aluminum device with various projections. The wall portion houses a long-life electromagnet. The door portion includes a stainless steel plate armature, pivoted mounted on a shock absorbing nylon bearing. Brushed zinc finish.

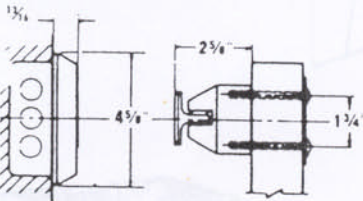
Surface Wiring



CAT. 1508, surface wiring, projection 4 3/4"

The Cat. 1508 electromagnet portion mounts on a surface adapter housing (junction box) provided for wall mounted surface.

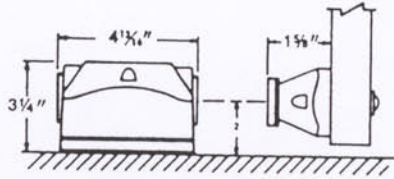
Concealed Wiring



CAT. 1504, concealed wiring, projection 3 1/4"

The Cat. 1504 electromagnet is for concealed wiring on a standard 2" x 4" outlet box. Used for standard projection of doors.

Floor Mounted



Electromagnet portion consists of a floor plate and a floor housing, which when installed with gaskets provided, form a waterproof electrical junction box. Incoming conduit connects directly into floor plate and forms an additional means of anchoring the unit to the floor.

The electromagnet (floor) portion may be obtained with one magnet face (1501) for holding a single door or two faces (1502) for holding doors back to back.

Catalog number suffix indicates power requirement of unit.

Ordering Information

Cat. No.	Voltage
1501-E1	12 VDC.
1501-G1	24 VDC
1501-G5	24 VAC
1501-N5	120 VAC

1502-E1	12 VDC
1502-G1	24 VDC
1502-G5	24 VAC
1502-N5	120 VAC

1504-E1	12 VDC
1504-G1	24 VDC
1504-G5	24 VAC
1504-N5	120 VAC

1508-E1	12 VDC
1508-G1	24 VDC
1508-G5	24 VAC
1508-N5	120 VAC

Current ratings of each magnet face.

120 VAC	.02 AMP
24 VAC	.011 AMP
24 VDC	.07 AMP
12 VDC	.17 AMP